
3000ft

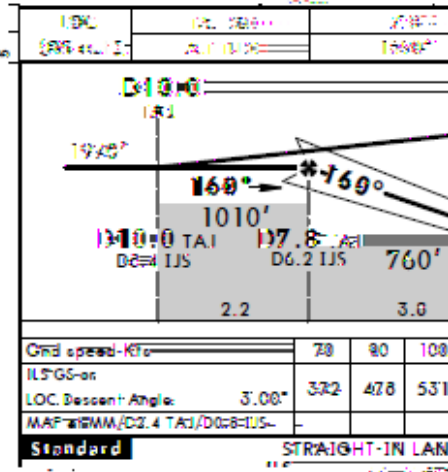
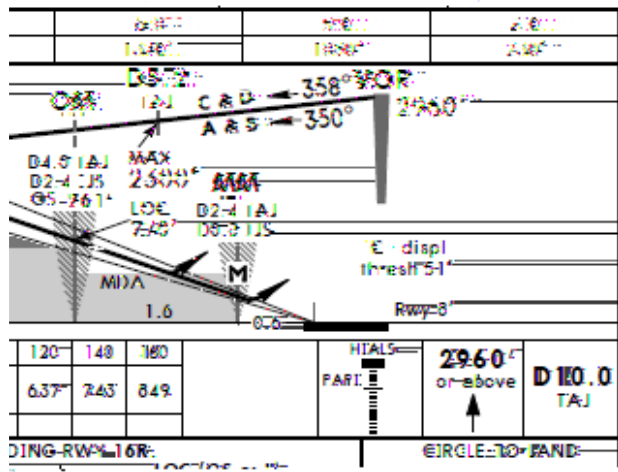
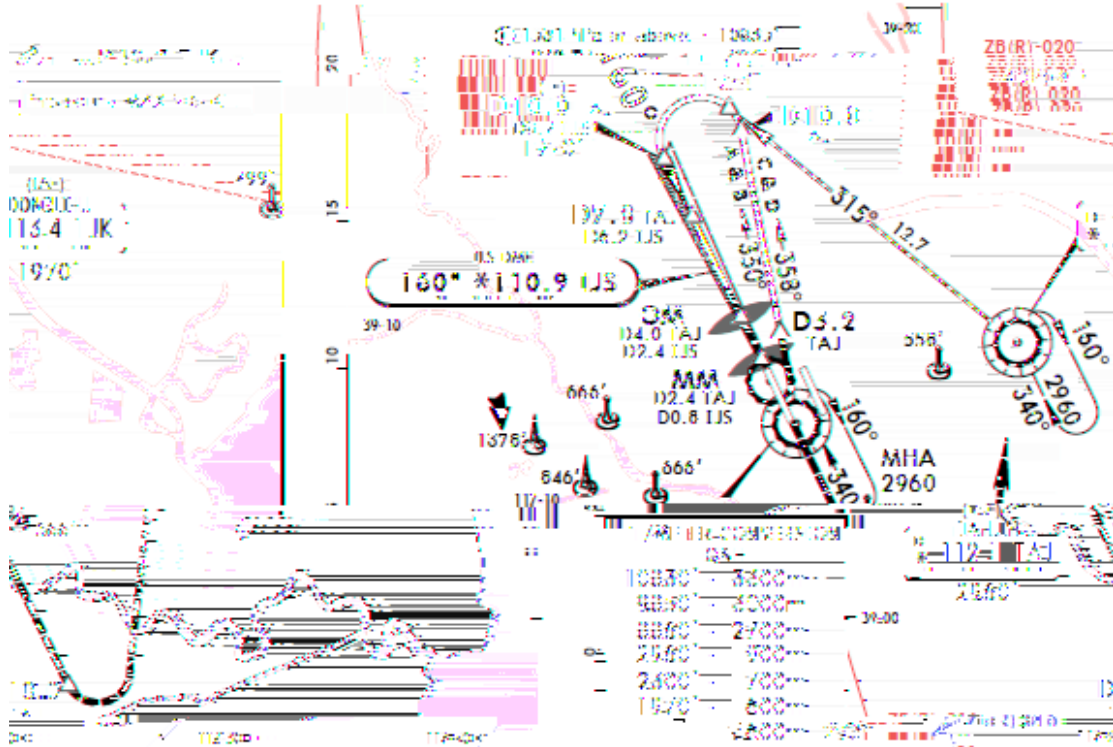
;L}

ZBTJ/TSN
BINHAI

JEPPESEN
26 JUN 15 (11-3)

TIANJIN, PR OF CHINA
ILS DME Z Rwy 16R

ATIS 126.4		TIANJIN Approach (R) AP01 127.9		TIANJIN Tower *AP02 125.25		*Ground 121.95	
LOC IJS	Final Appch Crs	GS OM		ILS DA(H)	Apt Elev 13'		



CHANGES: 1. 2015/06/15 MSA

CDFA

CDFA

ZBTJ/TSN
BINHAI



26 JUN 15 (13-1)

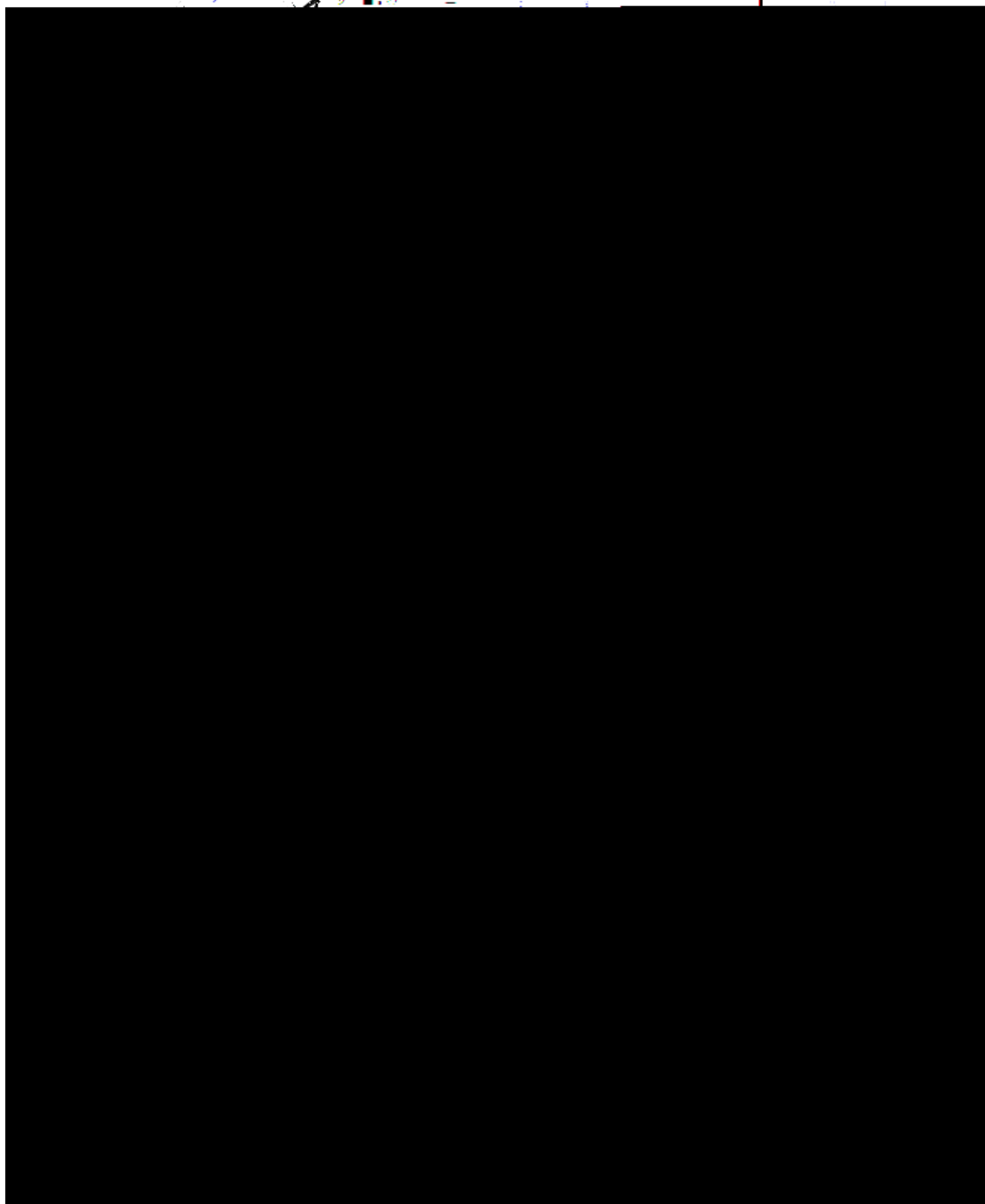
TIANJIN, PR OF CHINA
VOR DME Rwy 16R

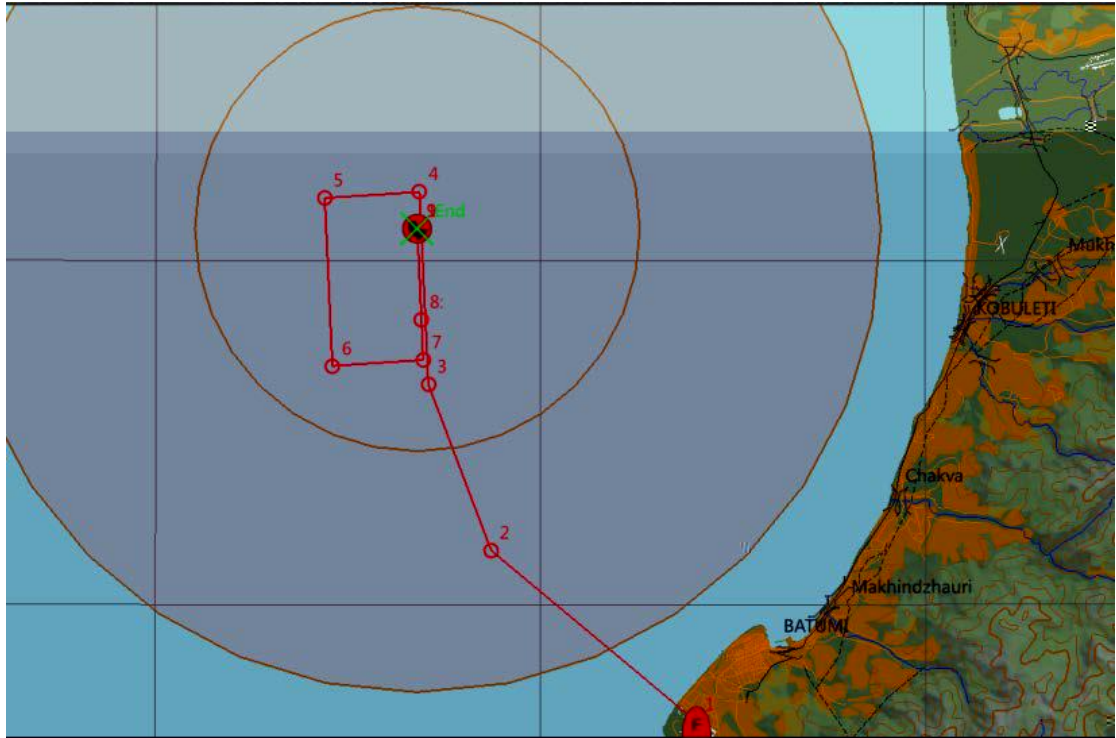
ATIS 126.4	TIANJIN Approach (R) AP01 127.9 *AP02 125.25		TIANJIN Tower 118.2	*Ground 121.95
VOR TAJ *112.1	Final Apch Crs 158°	Procedure Alt D7.8 1970' (1962')	MDA(H) 560' (552')	Apt Elev 13' Rwy 8'
				3000'

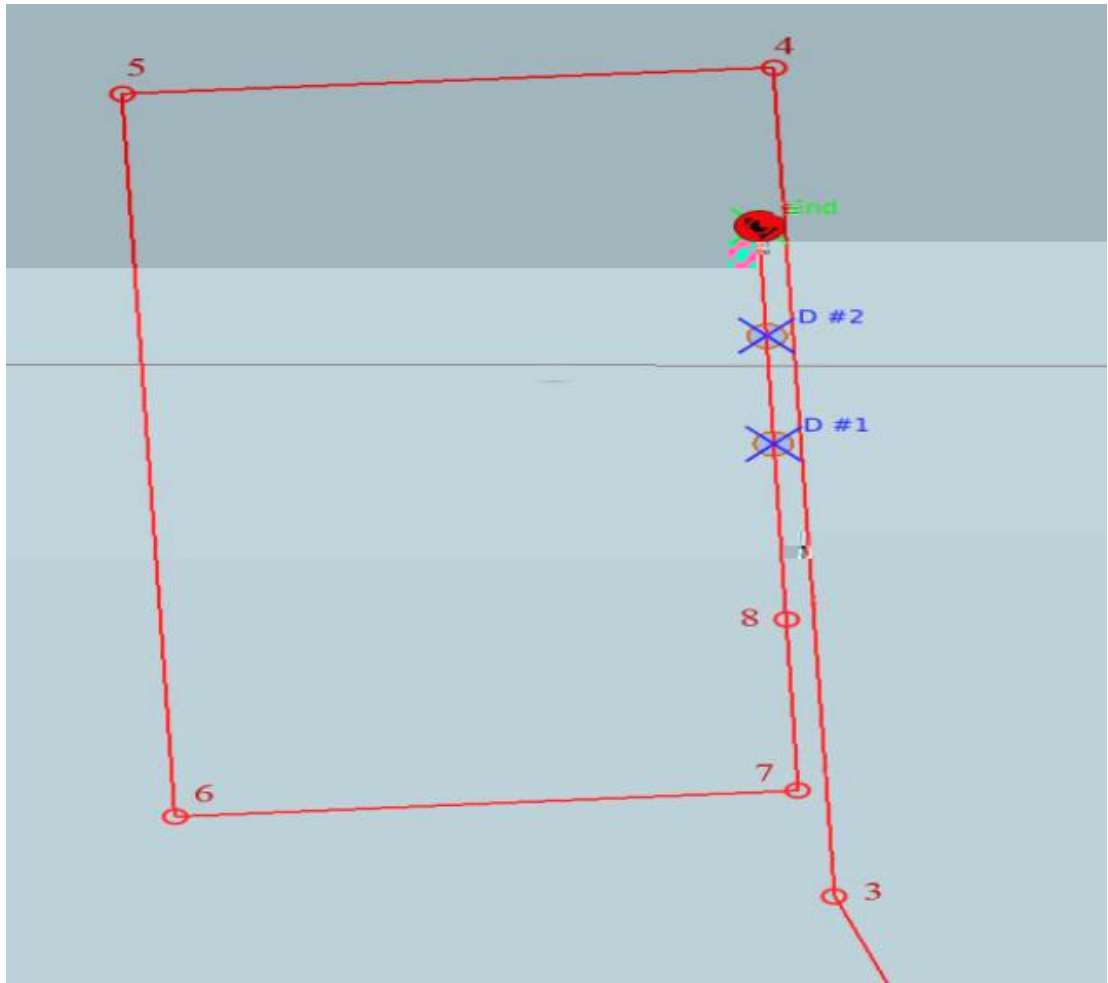
BRIEFING STRIP™

MISSER APCH. Climb STRAIGHT AHEAD to 1320' then turn LEFT to

Alt Set: hPa Rwy Elev: 0 hPa Trans level: FL 118 Trans alt: 9850' MSA TAJ VOR
Procedure MAX 205 KT.



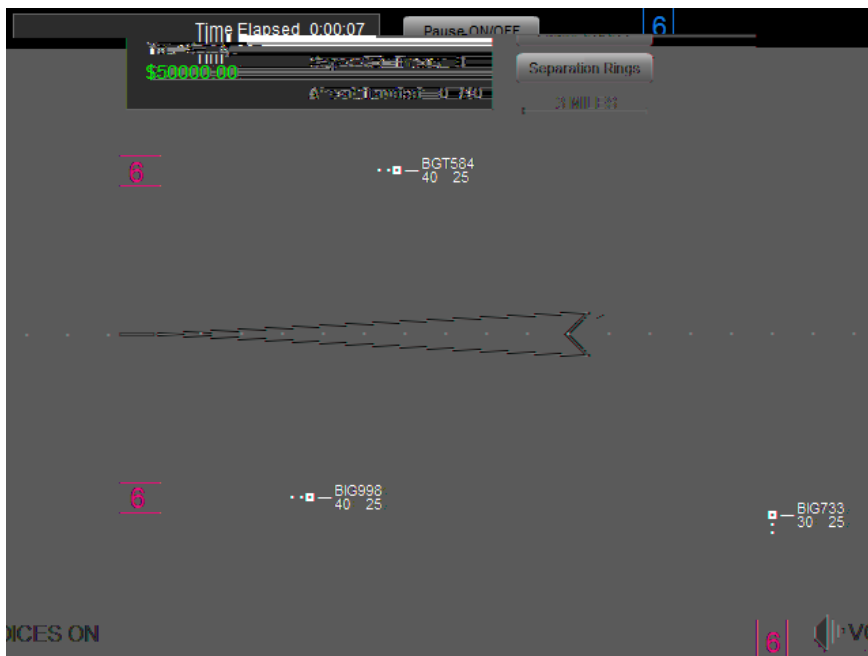


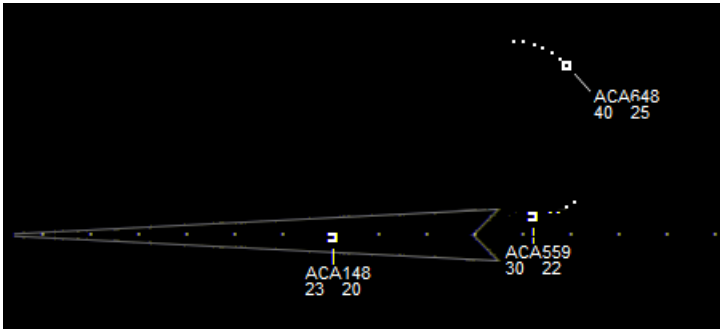




Attrition			RED/BLUE		General Debriefing Data			Log Filters	
PLANES	0	0	MISSION NAME:		INITIATOR	ALL			
HELICOPTERS	0	0	SIDE:	Russia	WEAPON	ALL			
SHIPS	0	0	RED:	Russia	SIDE	ALL			
AIR DEFENCE	0	0	BLUE:	Insurgents	EVENT	ALL			
VEHICLES	0	9	TIME:	000/12:00:00	TRGSIDE	ALL			
			PILOT:	New callsign	TARGET	ALL			
			AIRCRAFT:	Su-33					
			TASK:	Fighter Sweep					

Day/Time	Initiator	Country	Target	Country	Event	W
000/12:00:00					mission start	
000/12:01:01	New callsign	Russia	Return...		takenoff	
000/12:02:04	Point #2 (Infantry AK)	Insurgents			dead	
000/12:02:36	Point #3 (Infantry AK)	Insurgents			dead	
000/12:03:22	Point #4 (Infantry AK)	Insurgents			dead	
000/12:04:04	Point #5 (Infantry AK)	Insurgents			dead	
000/12:05:17	Point #6 (Infantry AK)	Insurgents			dead	
000/12:08:44	Point #7 (Infantry AK)	Insurgents			dead	
000/12:09:15	Point #8 (Infantry AK)	Insurgents			dead	
000/12:09:46	D #1 (Infantry AK)	Insurgents			dead	
000/12:10:04	D #2 (Infantry AK)	Insurgents			dead	
000/12:10:25	New callsign	Russia	Unit #2 (CV 1143.5 Admiral Kuznetsov)		land	
000/12:10:35					mission end	





—	—	—	—	—
—				
—				
—				
—				
—				
